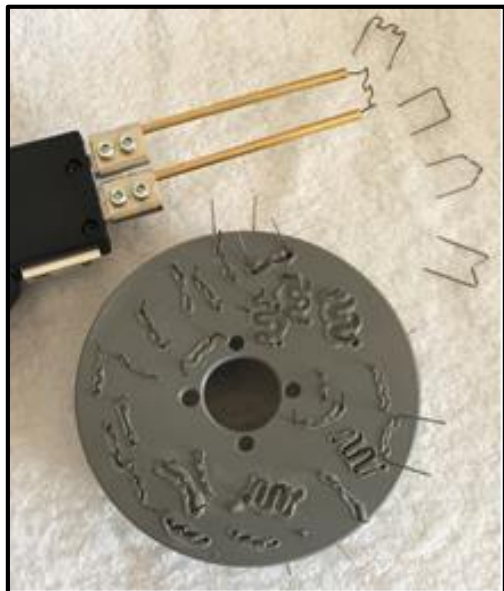


WINK PLASTIC WELDER

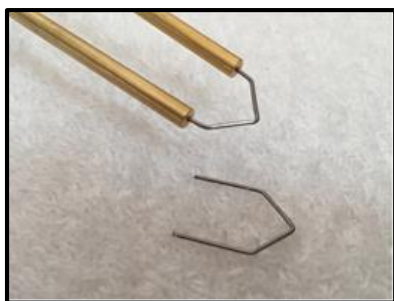
PLASTIC WELDER FOR PLASTIC MATERIALS



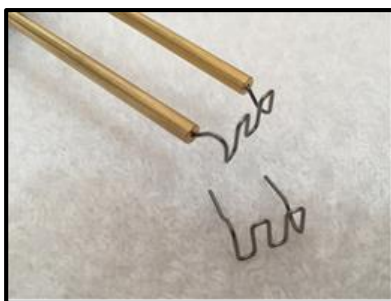
**WORKING IN JUST
2 SECONDS**



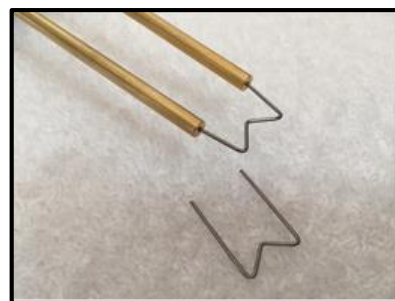
Plastic welder to reinforce crack on plastic materials using, after warming parts, predesigned stainless steel gages. Ergonomic, balanced and multifunctional 230V - 130W - 85 VA - 2,5V working in 2 sec., working temperature about 500° C. Having on board termic circuit breaker automatically reoperating welder after overheating.



Cod. **PIU** €12,80
stainless steel U
geometry. Box 100 pz



Cod. **PIGR** €12,80
stainless steel greek
geometry. Box 100 pz



Cod. **PIU** €12,80
stainless steel W
geometry.
Box 100 pz